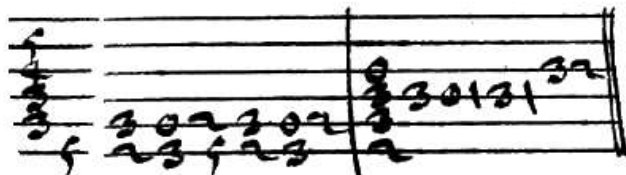
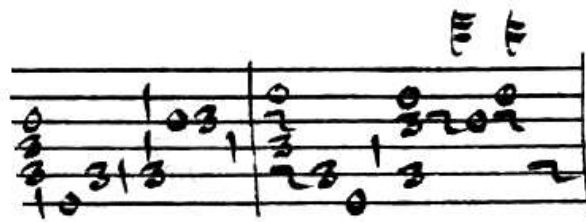
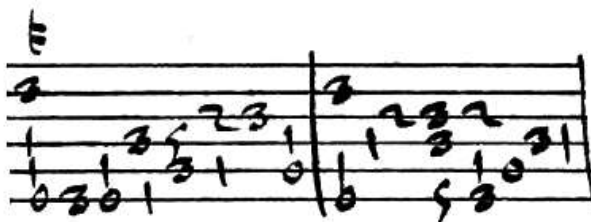
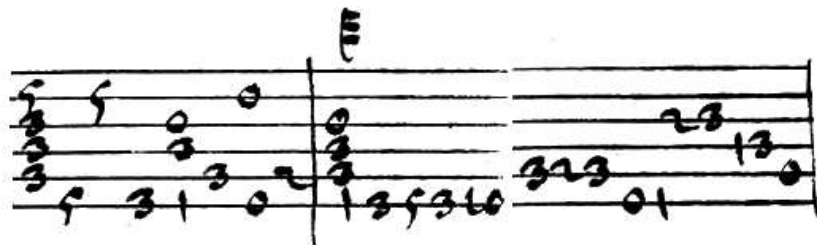


Passamezzo. 11.

258



Handwritten musical notation on a five-line staff. The notation includes a treble clef, a key signature of one flat (B-flat), and a 3/4 time signature. The music consists of a sequence of notes and rests, with some notes beamed together. There are three chord symbols above the staff: a treble clef with a flat, a treble clef with a flat, and a treble clef with a flat. The notes are: 3, 0, 2, 3, 0, 1, 3, 0, 3, 2, 0, 2, 3, 2, 0, 2, 3, 5, 3, 2, 0, 3, 2, 3, 0, 1, 2, 3, 1, 3.

Handwritten musical notation on a five-line staff. The notation includes a treble clef, a key signature of one flat (B-flat), and a 3/4 time signature. The music consists of a sequence of notes and rests, with some notes beamed together. There are two chord symbols above the staff: a treble clef with a flat and a treble clef with a flat. The notes are: 0, 1, 3, 0, 1, 3, 3, 0, 1, 3, 1, 3, 0, 1, 3, 0, 3, 0, 1, 3, 0.

Handwritten musical notation on a five-line staff. The notation includes a treble clef, a key signature of one flat (B-flat), and a 3/4 time signature. The music consists of a sequence of notes and rests, with some notes beamed together. There is one chord symbol above the staff: a treble clef with a flat. The notes are: 0, 3, 2, 3, 0, 5, 2, 3, 2, 3, 0, 3, 2, 3, 1, 3, 2, 0, 4, 2.

Handwritten musical notation on a five-line staff. The notation includes a treble clef, a key signature of one flat (B-flat), and a 3/4 time signature. The music consists of a sequence of notes and rests, with some notes beamed together. There are two chord symbols above the staff: a treble clef with a flat and a treble clef with a flat. The notes are: 2, 2, 2, 2, 2, 2, 3, 2, 2, 2, 4, 3, 2, 0, 3, 2, 0, 3, 2, 0, 3, 1, 3, 2.

Handwritten musical notation on a five-line staff. The notation includes a treble clef, a key signature of one flat (B-flat), and a 3/4 time signature. The music consists of a sequence of notes and rests, with some notes beamed together. There are four chord symbols above the staff: a treble clef with a flat, a treble clef with a flat, a treble clef with a flat, and a treble clef with a flat. The notes are: 0, 2, 3, 2, 3, 2, 3, 2, 4, 0, 0, 2, 3, 0, 1, 3, 0, 1, 3, 0, 1, 3.

Handwritten musical notation on a five-line staff. The notation includes a treble clef, a key signature of one flat (B-flat), and a 3/4 time signature. The music consists of a sequence of notes and rests, with some notes beamed together. There are two chord symbols above the staff: a treble clef with a flat and a treble clef with a flat. The notes are: 3, 3, 3, 2, 0, 3, 2, 3, 2, 3, 1, 3, 0, 1, 3, 0, 1, 3, 0, 1, 3, 0, 3, 1, 3, 2.

Handwritten musical notation on a five-line staff. The notation includes a treble clef, a key signature of one flat (B-flat), and a 3/4 time signature. The music consists of a sequence of notes and rests, with some notes beamed together. There are two chord symbols above the staff: a treble clef with a flat and a treble clef with a flat. The notes are: 0, 3, 5, 1, 0, 1, 4, 3, 1, 3, 2, 0, 4, 2, 0, 2, 3, 2, 0, 3, 2, 0, 2.

Handwritten musical notation on a five-line staff. The notation includes a treble clef, a key signature of one flat (B-flat), and a 3/4 time signature. The music consists of a sequence of notes and rests, with some notes beamed together. There is one chord symbol above the staff: a treble clef with a flat. The notes are: 3, 0, 3, 2, 3, 0, 3, 2, 0, 2, 4.

259

Handwritten musical notation on a five-line staff. The notation includes various rhythmic values and fingerings, such as 0, 2, 3, 4, 1, 2, 3, 1, 3, 0, 2, 3, 1, 3, 0, 1, 3, 0, 1. Above the staff, there are several vertical bar lines and a large 'E' symbol.

Handwritten musical notation on a five-line staff. The notation includes rhythmic values and fingerings, such as 3, 3, 0, 3, 0, 3, 1, 3, 5, 8, 7, 5, 3, 0, 3, 0, 3, 1, 3, 2. Above the staff, there are several vertical bar lines and a large 'E' symbol.

Handwritten musical notation on a five-line staff. The notation includes rhythmic values and fingerings, such as 2, 2, 3, 0, 4, 3, 1, 3, 0, 3, 3, 1. Above the staff, there are several vertical bar lines and a large 'E' symbol.

Handwritten musical notation on a five-line staff. The notation includes rhythmic values and fingerings, such as 3, 1, 3, 0, 1, 3, 0, 2, 1, 3, 3, 0, 3. Above the staff, there are several vertical bar lines and a large 'E' symbol.

Handwritten musical notation on a five-line staff. The notation includes rhythmic values and fingerings, such as 3, 0, 3, 2, 3, 0, 1, 3, 0, 2, 3, 3, 3, 2, 5, 4, 5, 2, 3, 3, 0, 3, 5. Above the staff, there are several vertical bar lines and a large 'E' symbol.

Handwritten musical notation on a five-line staff. The notation includes rhythmic values and fingerings, such as 3, 3, 3, 2, 0, 3, 2, 0, 3, 2, 0, 2, 0, 1, 3, 0, 1, 3, 0, 1, 0, 3, 1, 3, 2. Above the staff, there are several vertical bar lines and a large 'E' symbol.

Handwritten musical notation on a five-line staff. The notation includes rhythmic values and fingerings, such as 3, 5, 1, 3, 0, 1, 1, 4, 3, 1, 3, 2, 0, 4, 2, 0, 2, 3, 0, 2, 3, 2, 4, 0, 2, 3, 2, 0, 2, 3, 2, 0, 2. Above the staff, there are several vertical bar lines and a large 'E' symbol.

Handwritten musical notation on a five-line staff. The notation includes rhythmic values and fingerings, such as 3, 0, 3, 2, 3, 0, 3, 0, 3, 2, 4, 0. Above the staff, there are several vertical bar lines and a large 'E' symbol.