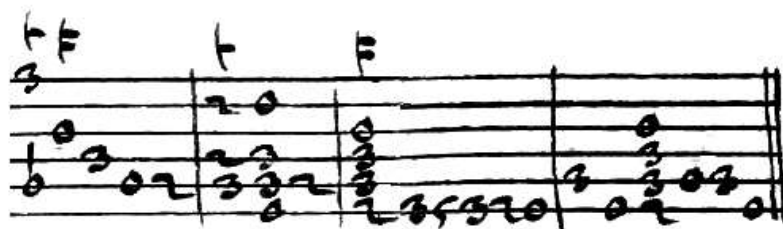
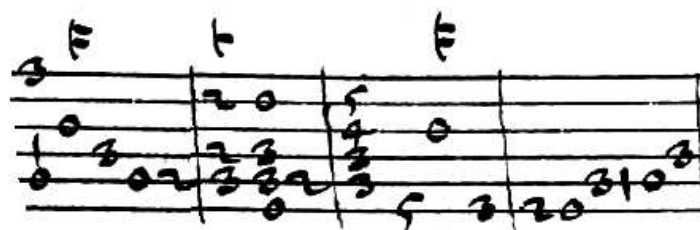


1 Romanesca undecima con cento parti.



2 Romanesca undecima con cento parti.

Handwritten musical notation for the first system, featuring a treble clef and a key signature of one flat (B-flat). The notation consists of two staves with rhythmic values and fingerings. Above the first staff, the letters "F" and "F" are written.

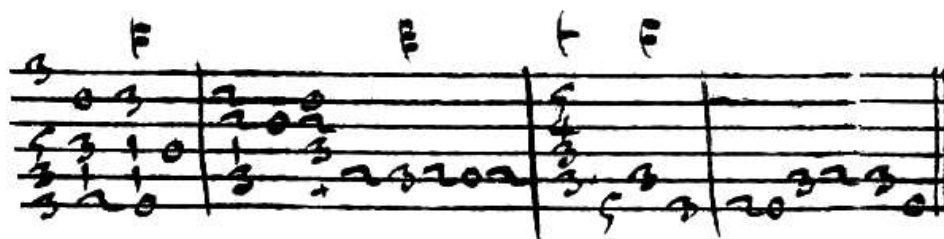
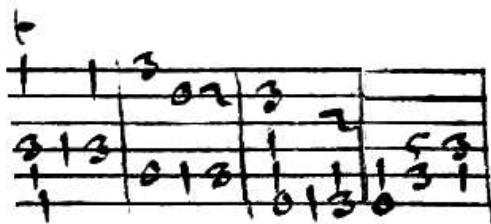
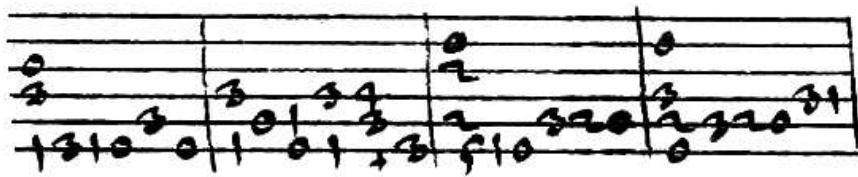
Handwritten musical notation for the second system, continuing the piece with two staves and rhythmic notation.

Handwritten musical notation for the third system, continuing the piece with two staves and rhythmic notation.

Handwritten musical notation for the fourth system, featuring a treble clef and a key signature of one flat (B-flat). The notation consists of two staves with rhythmic values and fingerings. Above the first staff, the letters "F" and "F" are written.

Handwritten musical notation for the fifth system, featuring a treble clef and a key signature of one flat (B-flat). The notation consists of two staves with rhythmic values and fingerings. Above the first staff, the letters "F", "F", "F", "F", "F", "F", and "F" are written.

3 Romanesca undecima con cento parti.



4 Romanesca undecima con cento parti.

Handwritten musical notation for the first system, featuring a treble clef and a key signature of one flat (B-flat). The notation includes a series of notes and rests on a five-line staff, with a 3/4 time signature indicated at the beginning. Above the staff, there are four vertical bar lines with a 'T' above each, likely indicating measure boundaries or specific rhythmic markers.

Handwritten musical notation for the second system, continuing the piece. It features a treble clef and a key signature of one flat. The notation includes a series of notes and rests on a five-line staff, with a 3/4 time signature indicated at the beginning.

Handwritten musical notation for the third system, continuing the piece. It features a treble clef and a key signature of one flat. The notation includes a series of notes and rests on a five-line staff, with a 3/4 time signature indicated at the beginning.

Handwritten musical notation for the fourth system, continuing the piece. It features a treble clef and a key signature of one flat. The notation includes a series of notes and rests on a five-line staff, with a 3/4 time signature indicated at the beginning.

Handwritten musical notation for the fifth system, concluding the piece. It features a treble clef and a key signature of one flat. The notation includes a series of notes and rests on a five-line staff, with a 3/4 time signature indicated at the beginning. The system ends with a double bar line and repeat dots.