

21 Romanesca undecima con cento parti.

Handwritten musical notation for the first system. It consists of two staves. The top staff contains a treble clef and a key signature of one flat (B-flat). The bottom staff contains a bass clef. The music is written in a style characteristic of early 20th-century manuscript notation, with notes and rests connected by lines. Above the first staff, there are two sets of chord symbols: the first set is a treble clef with a flat sign, and the second set is a treble clef with a flat sign and a sharp sign.

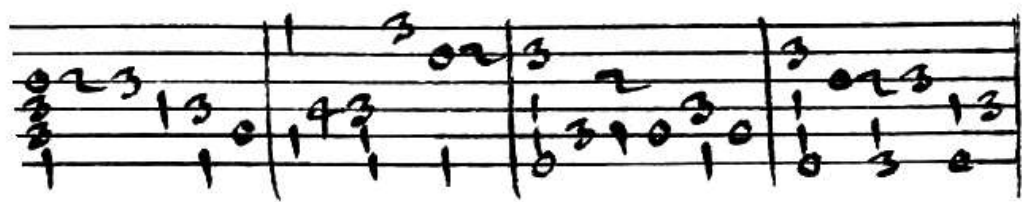
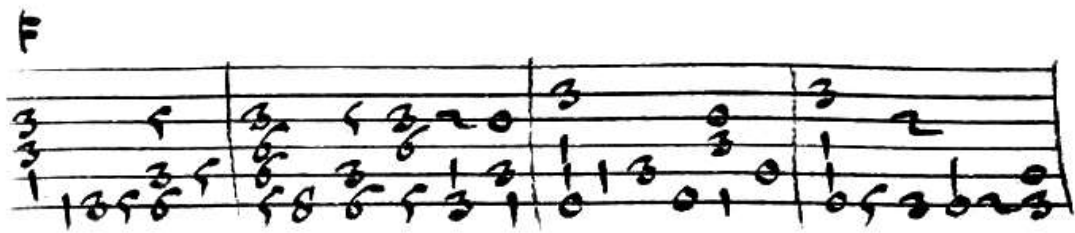
Handwritten musical notation for the second system. It consists of two staves. The top staff contains a treble clef and a key signature of one flat. The bottom staff contains a bass clef. Above the first staff, there are three sets of chord symbols: a treble clef with a flat sign, a treble clef with a flat sign and a sharp sign, and a treble clef with a flat sign.

Handwritten musical notation for the third system. It consists of two staves. The top staff contains a treble clef and a key signature of one flat. The bottom staff contains a bass clef. Above the first staff, there are two sets of chord symbols: a treble clef with a flat sign and a sharp sign, and a treble clef with a flat sign.

Handwritten musical notation for the fourth system. It consists of two staves. The top staff contains a treble clef and a key signature of one flat. The bottom staff contains a bass clef. Above the first staff, there are four sets of chord symbols: a treble clef with a flat sign, a treble clef with a flat sign and a sharp sign, a treble clef with a flat sign, and a treble clef with a flat sign.

Handwritten musical notation for the fifth system. It consists of two staves. The top staff contains a treble clef and a key signature of one flat. The bottom staff contains a bass clef. Above the first staff, there are five sets of chord symbols: a treble clef with a flat sign, a treble clef with a flat sign and a sharp sign, a treble clef with a flat sign, a treble clef with a flat sign, a treble clef with a flat sign, and a treble clef with a flat sign.

22 Romanesca undecima con cento parti.



23 Romanesca undecima con cento parti.

Handwritten musical notation for the first system. It consists of two staves. The top staff has a treble clef and contains notes with stems and flags. The bottom staff has a bass clef and contains notes with stems and flags. Above the first measure, there is a fermata symbol. Above the second measure, there are two fermata symbols.

Handwritten musical notation for the second system. It consists of two staves. The top staff has a treble clef and contains notes with stems and flags. The bottom staff has a bass clef and contains notes with stems and flags. Above the first measure, there are two fermata symbols.

Handwritten musical notation for the third system. It consists of two staves. The top staff has a treble clef and contains notes with stems and flags. The bottom staff has a bass clef and contains notes with stems and flags. Above the first measure, there are two fermata symbols.

Handwritten musical notation for the fourth system. It consists of two staves. The top staff has a treble clef and contains notes with stems and flags. The bottom staff has a bass clef and contains notes with stems and flags.

Handwritten musical notation for the fifth system. It consists of two staves. The top staff has a treble clef and contains notes with stems and flags. The bottom staff has a bass clef and contains notes with stems and flags. Above the first measure, there is a fermata symbol. Above the second measure, there are two fermata symbols.

Handwritten musical notation for the sixth system. It consists of two staves. The top staff has a treble clef and contains notes with stems and flags. The bottom staff has a bass clef and contains notes with stems and flags. Above the first measure, there are two fermata symbols. Above the second measure, there are two fermata symbols. Above the third measure, there are two fermata symbols. Above the fourth measure, there is a fermata symbol.

