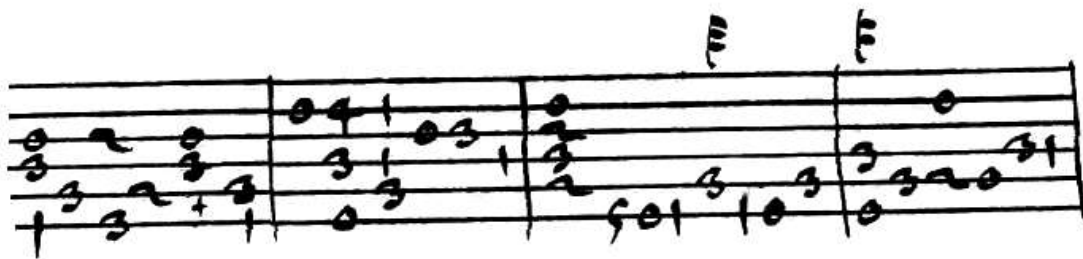
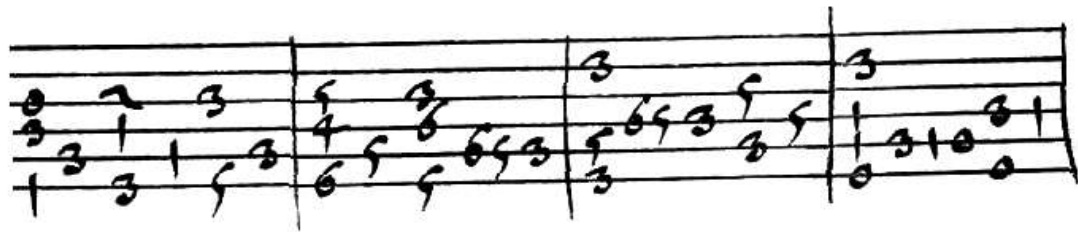
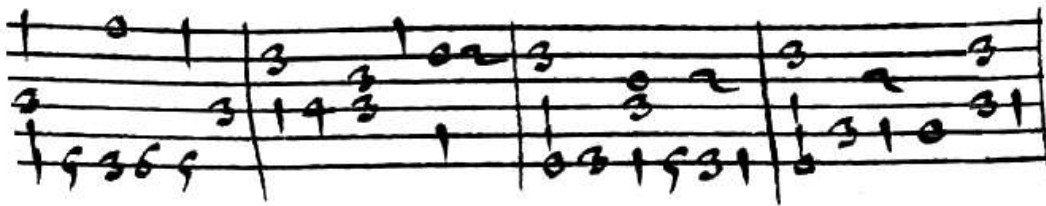
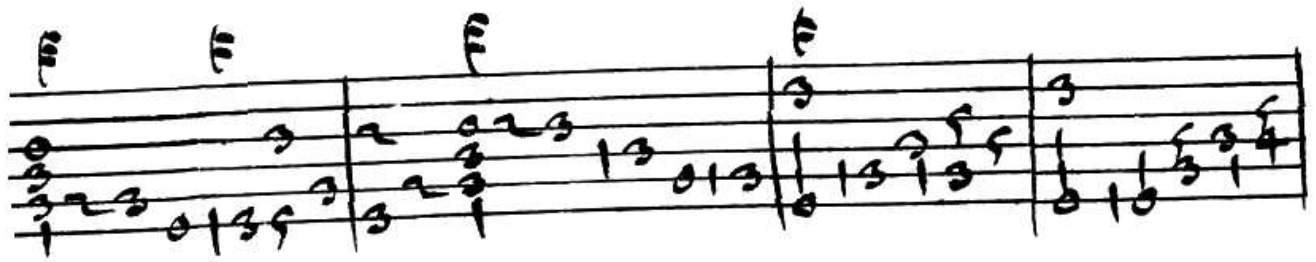


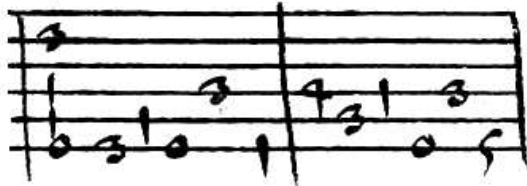
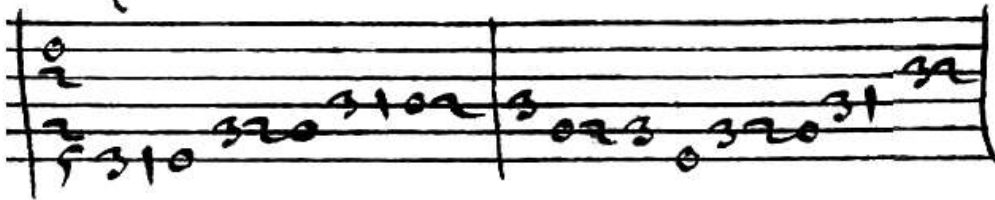
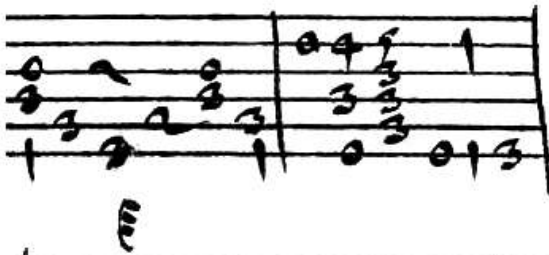
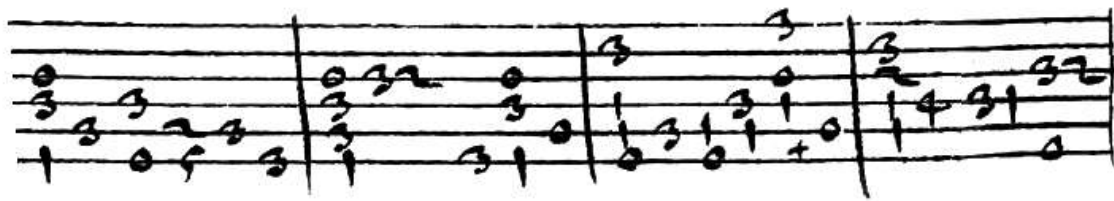
73 Romanesca undecima con cento parti.



74 Romanesca undecima con cento parti.



75 Romanesca undecima con cento parti.



76 Romanesca undecima con cento parti.

Handwritten musical notation for the first system. It consists of two staves. The top staff has a treble clef and contains notes with various rhythmic values and accents. The bottom staff has a bass clef and contains notes with rhythmic values. There are some markings above the top staff, possibly indicating fingerings or accents.

Handwritten musical notation for the second system. It consists of two staves. The top staff has a treble clef and contains notes with various rhythmic values and accents. The bottom staff has a bass clef and contains notes with rhythmic values. There are some markings above the top staff, possibly indicating fingerings or accents.

Handwritten musical notation for the third system. It consists of two staves. The top staff has a treble clef and contains notes with various rhythmic values and accents. The bottom staff has a bass clef and contains notes with rhythmic values. There are some markings above the top staff, possibly indicating fingerings or accents.

Handwritten musical notation for the fourth system. It consists of two staves. The top staff has a treble clef and contains notes with various rhythmic values and accents. The bottom staff has a bass clef and contains notes with rhythmic values. There are some markings above the top staff, possibly indicating fingerings or accents.

Handwritten musical notation consisting of three stylized symbols, possibly representing chords or specific rhythmic patterns.

Handwritten musical notation for the fifth system. It consists of two staves. The top staff has a treble clef and contains notes with various rhythmic values and accents. The bottom staff has a bass clef and contains notes with rhythmic values. There are some markings above the top staff, possibly indicating fingerings or accents.

Handwritten musical notation for the sixth system. It consists of two staves. The top staff has a treble clef and contains notes with various rhythmic values and accents. The bottom staff has a bass clef and contains notes with rhythmic values. There are some markings above the top staff, possibly indicating fingerings or accents.

Handwritten musical notation for the seventh system. It consists of two staves. The top staff has a treble clef and contains notes with various rhythmic values and accents. The bottom staff has a bass clef and contains notes with rhythmic values. There are some markings above the top staff, possibly indicating fingerings or accents.